

DIGARCH 2015 NOTES**Practical Implementation of a QR-Code Web-based Application
On enhancing visitor's experience by providing content on demand**

A. KOUTSOUDIS
akoutsou@ceti.gr

F. ARNAOUTOGLOU
fotarny@ceti.gr

G. PAVLIDIS
gpavlid@ceti.gr

Abstract

The idea of enriching a cultural heritage visitor's experience by employing mobile devices such as smartphones and tablets is an active research domain. This is mainly due to the worldwide user penetration of such devices along with their continuous hardware performance enhancement.

This tutorial presents to the reader the experience and feedback gained by the annual operation of an experimental information system that aims in enhancing the experience of a visitor on his/her demand. The evaluated system is based on the use case-scenario where a mobile device is used to capture and decode the passive markers that are located on facades of listed buildings in the old town of Xanthi (Greece) in order to enrich the visitor's experience through a broad context of historical and architectural information delivered over the Web.

Furthermore, the tutorial continues on the description and implementation of a simple Web-based information system. It presents the various simplified PHP scripts required in order to implement such a bilingual system along with a minimal visitor statistics visualisation script. This tutorial has been adapted for the needs of the Digital Technologies in Cultural Heritage and Tourism 2015 summer school and it is offered as supplemental material to all participants.

1. Introduction

The enrichment of a cultural heritage visit experience through the exploitation of information technologies is an active research area. Portable devices such as smartphones and tablets had a vast impact towards this direction. This is not only due to their extreme popularity (over one billion users according to a recent report from Strategy Analytics [1]) but also due to their continuous hardware and software advancements. Nowadays, it is common for such devices to be equipped not only with high-speed communication technologies but also with multi-core processors, graphics processing units, high resolution digital cameras, global-positioning circuitry, digital compasses and a variety of other sensors.

During the last decade, a number of research and development projects presented solutions that set a smartphone or tablet as a user-friendly terminal device that can enhance the cultural heritage visit experience. Today, it is obvious that such devices compose a versatile platform

with an adaptable graphical user interface that can efficiently deliver multimedia content. This content can be generic or personalised. It can be presented either automatically by monitoring the user's actual position or on-demand based on the user's explicit request to interact with the system at a given time. Some of the most popular applications in the cultural heritage domain are focused on offering services such as information enrichment, interactive guides, augmented and virtual reality. Generally, the development of such systems is a vastly multilateral procedure due to the involvement of numerous challenges related to the characteristics of the environment being installed (indoors, outdoors or both), the distraction time of visitor's attention from the actual site or artefact, the visitor's effort and the non-uniformity of the system's user base (e.g. visitors of different skills, needs or interests).

In this tutorial, we discuss on the feedback gained by the annual operation and monitoring of an experimental low-cost cultural visit enrichment system that provides historical and architectural information about architectural entities (e.g. listed buildings, churches, squares, etc.) that are located in the centre of the old town of Xanthi. The current simplistic implementation delivers textual information to a mobile device on user's demand. A number of passive markers (quick response code plates) are used as triggers for initiating the delivery of information about a point of interest through a Web browser.

More specifically, in Section 2 we provide an overview of related cultural visit enhancement systems while in Sections 3 and 4, we describe and objectively evaluate our experimental system based on its annual operation and we discuss the experiences gained. We conclude in Section 5, with highlight the main properties and applicability of such systems in other cultural heritage domains.

2. Related Work

Over the last years numerous cultural visit enrichment frameworks and systems have been proposed. They attempt to meet different requirements specifications that are dictated by the actual installation environment (e.g. museums, archaeological sites, urban areas, etc.). They also vary in the data types being used for content (e.g. textual information, images, video sequences, interactive/non-interactive multimedia content, etc.). On the other hand, they share engagement motives such as the efficient delivery of interesting information, the visitor's amusement, engagement and interaction with the environment that will lead to a significant visibility increase and understanding of our cultural heritage thesaurus [1]. Below, we present such systems that can be used for outdoor applications such as urban areas and archaeological sites and for indoor applications such as museum exhibitions, building interiors, etc.

Sintoris et al. [3] discussed on the idea of enabled spaces. As enabled, they define a space which has the ability to use novel technologies and offer information services. Raptis et al. [4] performed a survey on the design of enabled space applications. In their work, they describe the importance of a theoretical framework that defines context through four dimensions (system, infrastructure, domain and physical) that complement and interact with each other.

The Agamemnon project introduced the idea of automated monument recognition based on images captured by visitors using their mobile device. The system composes a dynamic multimedia guide system that takes under consideration the time scheduled for a visit [5].

Angelaccio et al. [6] proposed a system architecture that combines geographic information systems (GIS) and business intelligence in order to compose a platform useful for developing Websites that provide tourist information such as hotel reservations, price comparisons, reviews, etc. Brondi et al. [7] worked on the development of a markerless augmented reality framework oriented to the cultural heritage domain. The system exploits the inertial sensors and the GPS sensors of the device in order to transform it into an augmented reality device. Uk Im et al. [8] presented an audio guide system that exploits the GPS sensor in order to offer dramatized local stories or simple narratives that describe the history of a place. Stefanov et al. [9] have recently reviewed a number of free applications that provide information about historical and urban areas of cultural importance located in Bulgaria.

On the other hand, Mathew Nickerson discussed on using smartphones for audio-based guides in museums using the Voice-XML technology [10]. Kuusik et al. [11] presented a museum-oriented solution for personalised content access that addresses aspects such as unifying user preferences, context information and content annotation. Za et al. [12] presented the MID-blue framework, a multimedia information distribution system architecture that operates over Bluetooth communication technology. Their framework is able to provide specific content related to the user's position within the premises of a museum.

Additionally, Rung et al. [13] created an iOS-based application focused on the work of Henri de Toulouse-Lautrec that could be used before, during or after the visit to the exhibition. A museum guide system was also presented by Ruf et al. [14]. Their system was based on the calculation of the scale-invariant feature transform (SIFT) on photos captured by a smartphone. Using SIFT coefficients as a content descriptor the system could recognise paintings in an art gallery and retrieve relevant information. Choudary et al. [15] presented an augmented reality system that is focused on prehistoric cave engravings. The system augments the captured images with expert's drawings, highlighting in real time the animal engraving that are almost impossible to observe with the naked eye. In order to track the drawings the systems detects a custom type of passive markers located around the engravings.

Furthermore, the idea of using passive markers such as Quick Response (QR) Codes has already been exploited for both indoors and outdoors applications [16]-[21]. It is a cost-effective and powerful technology to detect the user's context and to infer user interests [20]. The outdoor experimental system evaluated in this work also exploits QR codes. One of the leading motives behind its implementation was to acquire an objective feedback of such a system's installation and operation while based on a real-world use-case scenario. Such feedback can be considered as a sufficient basis for future investments in installing such information systems or extending their functionality.

3. System Architecture and Implementation

The main idea behind the system is that a mobile device delivers historical and architectural information about architectural entities through a Web-browser according to the visitor's demand.

The proposed system does not offer a strict *follow-specific-path* interactive guide. It is a more open solution where the visitor chooses his/her own path to follow and when a point-of-interest (POI) captures his/her attention then through a minimised number of user interactions, he/she can have access the digital content over the Web. QR codes and generally passive markers based systems offer accurate localisation of the visitor through inexpensive infrastructure.

In addition, the cost of the presented system remains low as the required capabilities are already built in the visitor's device. More specifically, the visitor can use any mobile device that is: *i)* equipped with a digital camera, *ii)* can access the Web over WiFi or over a mobile carrier, *iii)* has any Web browser and QR code decoding software installed. In fact, all major operating systems provide such functionality in terms of pre-installed software or as free applications that can be downloaded through a secured application download services (e.g. Google play, App store, etc.). Thus, the development was related solely on the implementation of the system's backend.

Figure 1 illustrates the simplistic system's architecture along with the steps of user interaction involved. The backend operates on PHP, MySQL and CSS3 technologies and is able to deliver information using URI-based queries that include parameters that uniquely identify POIs and preferred textual content language. The system replies to each query with a Web page which content is adapted to the screen resolution of the target device. Each Web page contains a generic text of historical and architectural aspects of the POI, followed by a number of related references.

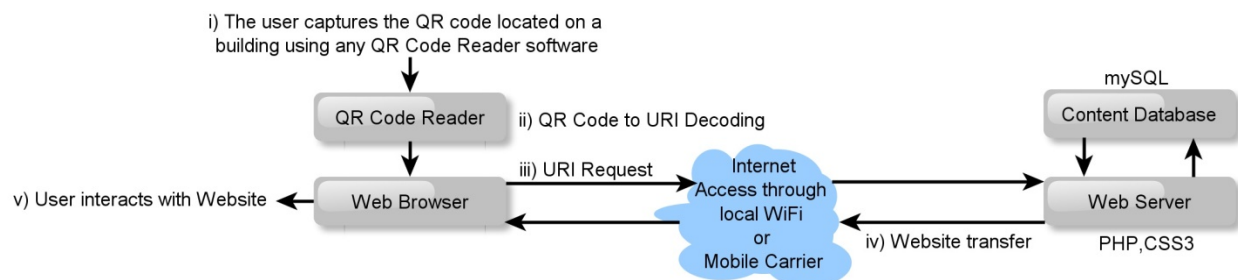


Figure 1. System architecture and steps of user interaction

Furthermore, the centre of the old town of Xanthi was selected for installing and testing the system not only for its cultural heritage importance but also because it has visiting activity through the year and because it is covered by the municipality's free Wi-Fi network. A total of

thirteen POIs were identified and documented. Each of the POIs is referred to an architectural entity such as a listed building, a church or even a square of historic importance. In addition, all POIs are located in the centre of the old town as it is considered the most common region to be reached by visitors.

Additionally, all URI-based queries, that trigger the system to reply with a Web-page, were encoded into QR code images and were printed on custom metal plates covered with an antiglare films to improve camera capturing robustness. They were placed either on the facades of the buildings or on other high-visibility spots. Special permissions had to be acquired by the owners of the buildings and the municipality of Xanthi. Each plate has the equivalent size of an A4 page and carries a short bi-lingual explanatory text about using the system. Figure 2 depicts the POIs dense spatial distribution over an aerial view of the old town's centre along with a picture of a plate installed.

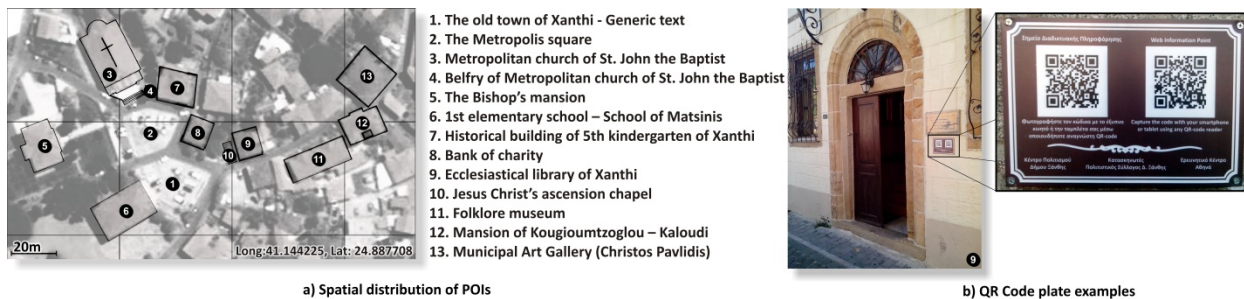


Figure 2. POIs spatial distribution and QR code plate examples

4. System Annual Operation and Evaluation

In order to perform an objective evaluation of the experimental system, we monitored its annual usage based on mechanisms offered by the system's Web server and gathered quantitative data. In this section, we present some of the statistics related to its operation.

More specifically, Figure 3a depicts the totals of content requests (unique hits) served by the system ordered per POI and per content language. A total of 879 unique content requests were served by the system (648 requests for Greek language content and 231 requests for English language content). The higher number of requests for the Greek language content may be considered as an indicator of the old town visitors' nationality. Figure 3a clearly depicts that there are a few favoured POIs regardless of the content's language. This is highly related to specific POI's properties such as the notable architectural characteristics and the visitor's easiness of accessing the passive marker. Considering the case were most visitors walk on the middle of a pedestrianized street to have a good view of the buildings of both sides then it is probable that a marker that is located in narrow street (POIs 9 and 10) or on a crossroad (POI 12) will be more popular. Again, POI 12 is located on a crossroad that it considered as one of the most photoshooted areas of the old town and this is also depicted by its high number of views. It should be noted that POIs 2 and 4 were damaged at some point within the first month

of the system's operation. The POI2 plate was completely removed while POI 4 content was scratched to a degree that QR codes were unreadable. Nevertheless, the damaged plates ($\approx 15\%$ of total number of plates) were not replaced before the completion of the experiment as vandalism was also an important aspect that should be taken under consideration during the experimental operation of such an unattended system.

Furthermore, Figure 3b illustrates the totals of content requests per hour. The system is found to be used even on late hours. Figure 3c depicts the system's total usage activity per month. The highest numbers of content requests are found during the months August and October (112 and 125 respectively). It should be noted that during the last week of August and first week of September an annual festival dedicated to the old town takes place and thus the number of visitors is significantly increased.

In addition, Figure 3d depicts the percentage share of the visitor's mobile device operating system. The results gained do step with the current generic user penetration levels of these operating systems. The Android operating system was the most popular between the visitors' devices followed by iOS. The share ambiguity of the unrecognised operating systems devices (Figure 3d) was a result of the inability or denial of the mobile device's Web browser to provide the logger script with the request information. The wide range of operating systems portrays the system's high accessibility from different mobile devices. It should be noted that the version fragmentation of the Android operating system that is depicted in the system's log (Version 2.2.1 up to more recent such as version 4.1.2) also confirms the previous conclusion.

Moreover, Figure 3e illustrates the total activity of the system on a daily basis. The totals are organised into four groups where each one represents a time period of six hours (00:00-05:00, 06:00-11:00, 12:00-17:00 and 18:00-23:00). The weekend days are found to be the most active ones as well as midday and evening hours.

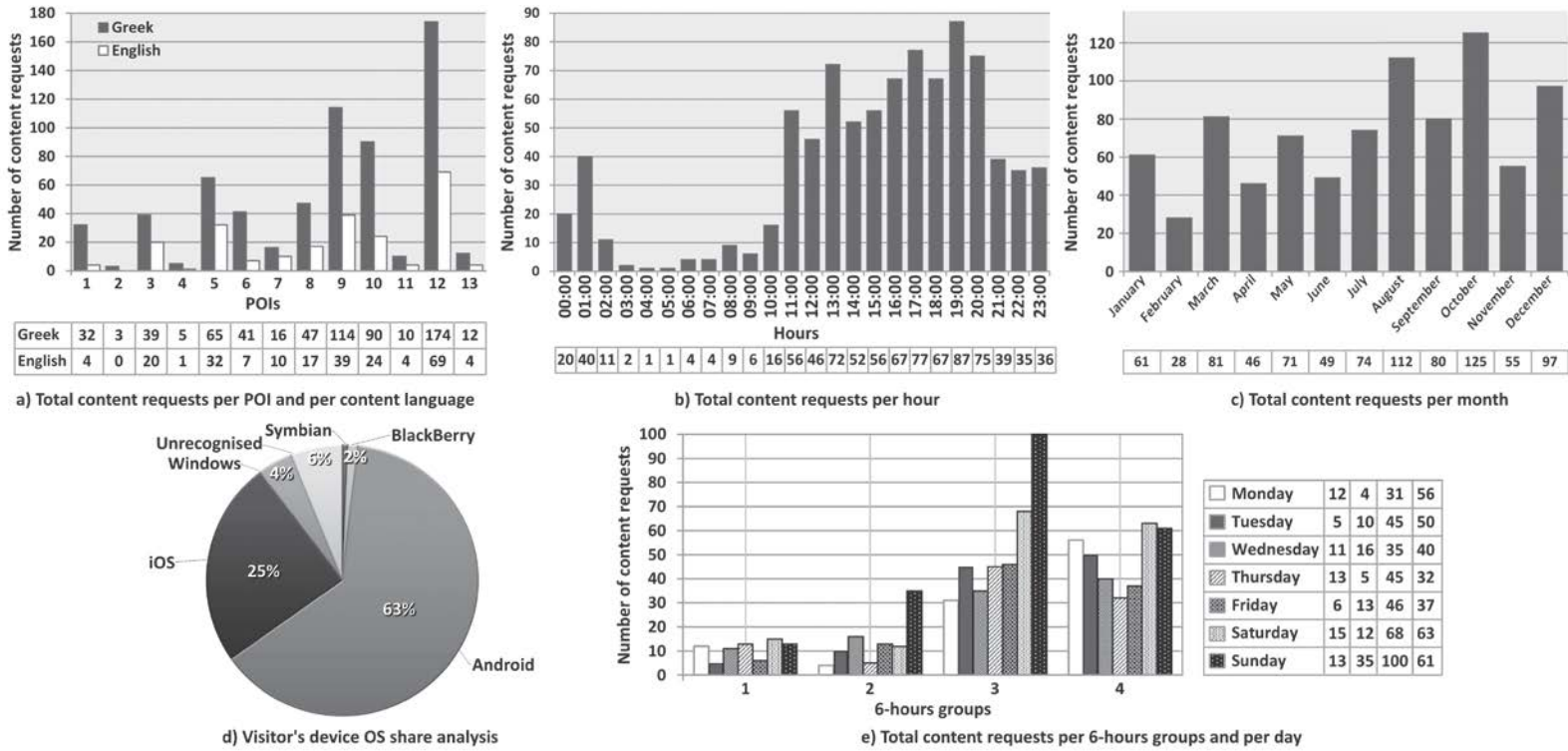


Figure 3. Statistical analysis of system's annual usage

Moreover, other performance aspects such as the system's responsiveness was unable to be accurately monitored as the primary bottleneck, that is the variable wireless data transfer bandwidth, relies on the current Wi-Fi network or on the bandwidth offered by the mobile carrier. Nevertheless, the small data size ($\approx 30KB$) of each POIs content resulted a low-cost in terms of usage system (mobile carrier data transfer charges) and an average delay of eight seconds for the procedure of QR code capturing, decoding and content transferring using a 3G network of a national mobile carrier. The previous measurements were performed using a single core (Cortex A8-1Ghz) Android (version 4.0.3) smartphone device equipped with the free QR Droid [22] application and Android's native Web browser. Additionally, content retrieval accuracy and precise visitor localisation in such systems is always guaranteed by the use of unique passive markers.

The previous statistics indicate that visitors were familiar with passive marker based systems and were interested in either getting additional information or curious to use their mobile devices for other purposes. It should be noted though that although the old town of Xanthi is covered by a Wi-Fi network that can be used for free it requires a registration procedure that might be considered by some visitors as a time consuming or distracting procedure. Moreover, in cases where a visitor has to use a mobile carrier to access the Web, the significant issue of data transfer charges is raised especially for those that are using a different from their home location connection service (roaming mode).

5. Script Analysis and Implementation

In this section, we present the PHP scripts required for the implementation of an on-line system that delivers informative textual content along with an image of a cultural heritage asset and a list of references to further information related to the asset. The on-line system will be based on plain HTML and PHP technologies. A statistical analysis script is also provided in order to monitor the usage of the system. The figure below illustrates the operation of the system. A more detailed analysis of the figure and the scripts will be given during the summer school. The system will be implemented and tested in close collaboration with the participants.

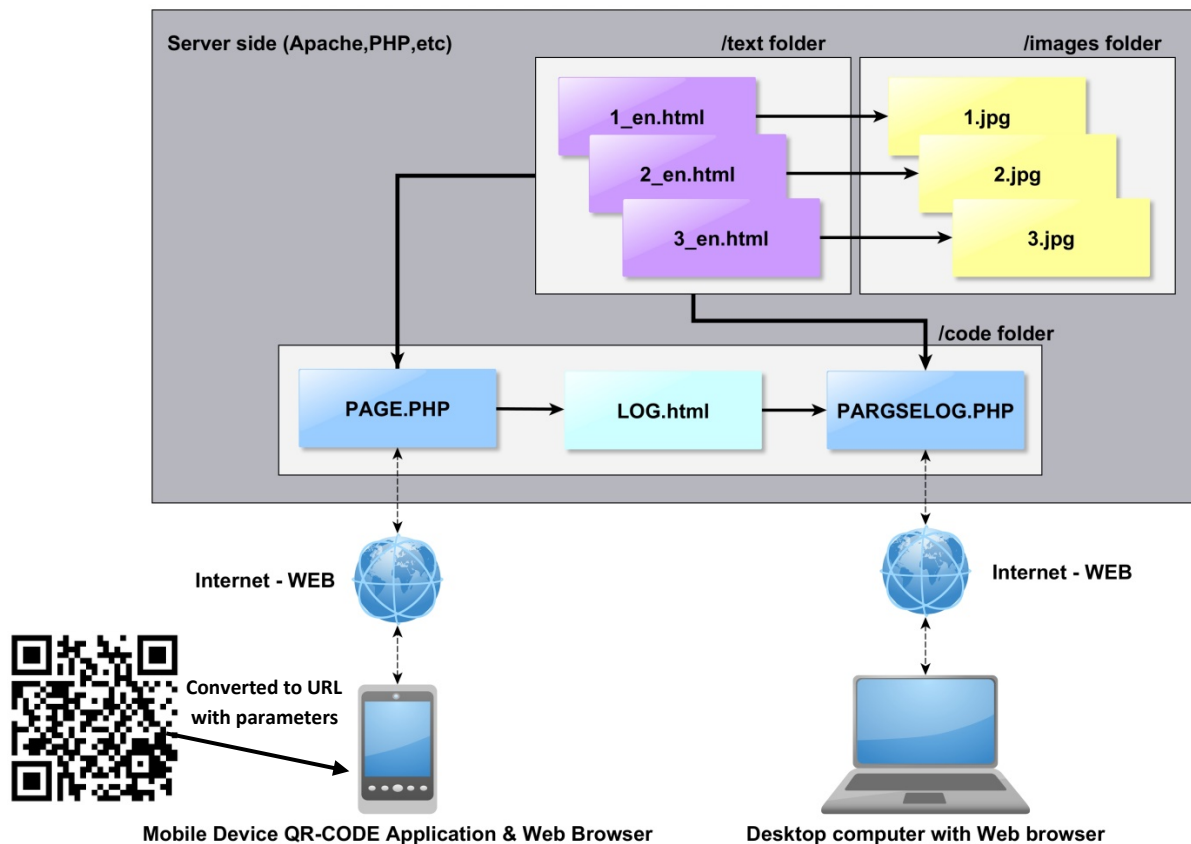


Figure 1 Implemented System Workflow Visualisation

For the successful implementation of the above system, participants should have a smartphone/tablet with a QR-CODE reader application and a laptop computer system. There are many of them freely available through Google Play and AppStore. Furthermore, a number of open source software tools will be offered to the participants to be used during the tutorial. Below are the PHP scripts and file examples that will be used in-class for the implementation of the system. In order to simplify the in-class tutorial implementation we will replace the database with a number of files organised into different folders.

File 1: page.php This file contains the primary scripts that set the size of the fonts based on the portable device (e.g. mobile phone/tablet) screen resolution and it retrieves the textural information requested based on two parameters a unique ID and the language.

```
<!DOCTYPE html>
<html>

  <head>
    <meta http-equiv="Content-Type" content="text/html; charset=utf-8" />
    <meta name="viewport" content="width=device-width, minimum-scale=1.0, maximum-
scale=4.0" />
    <title><?php $l=$_GET['lang']; if ($l=='en') {echo 'The old city of Xanthi';} else {
echo 'Η παλιά πόλη της Ξάνθης'; } ?></title>
    <style>
      body {background-color:#ffffff;color:#000000;font-family:"Arial";font-size:16px;}
      h1 {color:#000000;font-family:"Arial";font-size:18px;}
      h2 {color:#000000;font-family:"Arial";font-size:18px;}
      p {color:#000000;}

      @media screen and (max-width: 800px) {
      body {background-color:#FFFFFF;color:#000000;font-family:"Arial";font-size:14px;}
      h1 {color:#000000;font-family:"Arial";font-size:16px;}
      h2 {color:#000000;font-family:"Arial";font-size:16px;}
      p {color:#000000;}

      @media screen and (max-width: 480px) {
      body {background-color:#FFFFFF;color:#000000;font-family:"Arial";font-size:14px;}
      h1 {color:#000000;font-family:"Arial";font-size:14px;}
      h2 {color:#000000;font-family:"Arial";font-size:14px;}
      p {color:#000000;}

      @media screen and (max-width: 320px) {
      body {background-color:#FFFFFF;color:#000000;font-family:"Arial";font-size:12px;}
      h1 {color:#000000;font-family:"Arial";font-size:14px;}
      h2 {color:#000000;font-family:"Arial";font-size:14px;}
      p {color:#000000;}

      @media screen and (max-width: 240px) {
      body {background-color:#FFFFFF;color:#000000;font-family:"Arial";font-size:12px;}
      h1 {color:#000000;font-family:"Arial";font-size:10px;}
      h2 {color:#000000;font-family:"Arial";font-size:10px;}
      p {color:#000000;}
    }
  </style>
</head>

<body bgcolor="#FFFFFF">
  <?php
    $l=$_GET['lang'];$a= $_GET['which'].'_'.$l.'.html'; include $a;

  ?>
  <br><center></center>
  <?php
    $file = fopen('log.html', 'a');
    fwrite($file, date('H:i dS F')." '$_SERVER['REMOTE_ADDR']."' .
    $_SERVER['HTTP_USER_AGENT']."' . 'ID: '$_GET['which']."' . 'lang: ' .
    $_GET['lang']."'<br>');
    fclose( $file );
    include 'implementation_'.$l.'.php'; include 'sponsored_'.$l.'.php';

  ?>
</body>
</html>
```

File 2: sponsored_en.php This file contains the part of the content that is always presented to the user. This file for example may contain a set of links or a text related to the affiliation of the developers.

```
<p><h2><a name="Supported by:">Supported by:</a></h2>
<ul class="a">
  <li><a href="http://www.ceti.gr">Athena Research Centre - Xanthi's Division</a></li>
  <li><a href="http://www.deax.gr">Municipal Company of Development of Xanthi</a></li>
</ul>
```

File 3: 1_en.html This is an example of the textural information related to an asset. As mentioned before for simplicity reasons the database is replaced by a set of files organised into folders. The file is composed by a unique ID (e.g. 1) and two letters indicating the language been used (e.g. en – English UK)

```
<h2><a name="The old town of Xanthi">The Old Town of Xanthi</a></h2>
<br><br><div align="justify">
The old town of Xanthi is built at the bottom of the Rhodope Mountain, at a lower level of the remains of the walls of the Byzantine Xantheia. It occupies an area of approximately 77 acres. The old town is surrounded by two valleys (by the west) and the Kosynthos river (by the east). The modern city of Xanthi is located south of the traditional settlement. The east side of the river is occupied by the "Samakov" settlement, the creation of which dates to more recent times than the old town. The current form of the old town of Xanthi was shaped until 1912. After the Bulgarian occupation (1913-1919) and during the period between 1919-1940, the region had a limited building activity. The prosperity of the settlement dates to the years between 1870 and 1910. During that period and due to the growth of tobacco cultivation, the city was transformed into the commercial, administrative and military centre of the region. The old town of Xanthi is characterised by the diversity of architectural types and styles, due to the period of the construction of the buildings and to the social status and culture of their owners. There are two principal architectural types that dominated the northern Greece during the 19<sup>th</sup> and early 20<sup>th</sup> century. These are the traditional folk house, which share common elements with the "folk" architecture of western Macedonia and Epirus and the "scholar" type, with a European origin.
The houses of the old town are harmonised completely with the environmental characteristics of the landscape and have meridian orientation. The access to them is achieved through a multiform and erratic network of cobbled roads, which form was dictated by the ground's morphology.
At the time of its flourish, the centre of the old town of Xanthi is inhabited by Orthodox Christian population that is spread around five religious centres, with the Cathedral of St. John the Baptist playing the main centre. As for the social stratification of the given period, the population consists of three classes, the class of the tobacco merchants, the working class, which consisted mainly of tobacco workers and the middle class. During the first 20 years of the post-war period (1960's) the settlement declined and was gradually abandoned. This was also a result of the tobacco trade decay that forced the population migration. <p>Most of the old town's centre was occupied by private residences, mainly of tobacco merchants and buildings for public use. Today it retains the same character, although many of the public activities have been moved to the modern city. The traditional settlement of Xanthi is considered the best preserved in eastern Macedonia and Thrace. The wear of time however and the abandonment, had begun to affect negatively, until the April of 1976, when it was declared as preserved monument and its restoration and protection began.</div>
<p><h2><a name="References">References</a></h2>
<ul>
<li>Διαμαντίδης Κ.- Λαγού Μ., Οικονομικές και κοινωνικές διαστάσεις διατήρησης της παλιάς Ξάνθης, Θρακικά Χρονικά 40, Ξάνθη 1985, 124-138.</li>
<li>Εξάρχου Θωμάς, «Η δημιουργία της παλιάς πόλης» στο Η προστασία και αναβίωση της παλιάς πόλης της Ξάνθης, Πρακτικά Ημερίδας, 3 Σεπτεμβρίου 2001, Εκδόσεις Περιοδικό Φοροτεχνική και Θρακική Προσέγγιση, 40-42.</li>
<li>Μελκίδη Χ., Παρατηρήσεις πάνω στον πολεοδομικό χάρτη του παραδοσιακού οικισμού της Ξάνθης, Θρακικά Χρονικά 43, Ξάνθη 1994, 139-174.</li>
</ul>
```

File 4: parselog.php This is the script that parses the system's log file and produces the statistical analysis of the visitors.

```

<html>
<head>
  <meta http-equiv="Content-Type" content="text/html; charset=utf-8" />
</head>
<body bgcolor="#FFFFFF">
<?php
// Initialise variables
  $android    = 0;
  $iphone     = 0;
  $windows    = 0;
  $mid        = 0;
  $totgreek   = 0;
  $totenglish = 0;
  for ($x=0;$x<24;$x++) $hoursarray[$x] = 0;
  for ($x=0;$x<24;$x++) $monday[$x]    = 0;
  for ($x=0;$x<24;$x++) $tuesday[$x]   = 0;
  for ($x=0;$x<24;$x++) $wednesday[$x] = 0;
  for ($x=0;$x<24;$x++) $thursday[$x]  = 0;
  for ($x=0;$x<24;$x++) $friday[$x]    = 0;
  for ($x=0;$x<24;$x++) $saturday[$x]   = 0;
  for ($x=0;$x<24;$x++) $sunday[$x]    = 0;
// Read Log File
$html = file_get_contents('http://www.67100.gr/summerschool/log.html'); // Change to
where the log file is
$pieces = explode("<br>", $html);
$xmax = count($pieces);
for ($x=0;$x<$xmax-1;$x++) // Check each line in the log file
  {
    // Count OS based users population
    if (strpos($pieces[$x], 'Android') !== false) { $android++; }
    if (strpos($pieces[$x], 'iPhone')  !== false) { $iphone++; }
    if (strpos($pieces[$x], 'Windows') !== false) { $windows++; }
    // Fixing time zone new york-xanthi
    $line = explode(" ", $pieces[$x]);
    $ti = explode(":", $line[0]);
    $a = $ti[0]+7; // Add 7 hours
    if ($a>=24) $a=$a-24; // Shift Hours about 23:00
    $hoursarray[$a]++;
    $time_of_hit[$x] = $a.'.'. $ti[1]; // Return fixed hour to string
    $date_of_hit[$x] = $line[1];

    $dat = substr($line[1], 0, 2); // Get date number without 'th'
    $month = $line[2];
    $mon = date("m", strtotime($month)); // Get month as number
    if ($x<=215) {$y='2012';} else {$y='2013';};
    $k = $y.'.'. $mon.'.'. $dat;
    $mera = date('l', strtotime($k));

    if ($mera=='Monday') { $monday[$a]++; }
    if ($mera=='Tuesday') { $tuesday[$a]++; }
    if ($mera=='Wednesday') { $wednesday[$a]++; }
    if ($mera=='Thursday') { $thursday[$a]++; }
    if ($mera=='Friday') { $friday[$a]++; }
    if ($mera=='Saturday') { $saturday[$a]++; }
    if ($mera=='Sunday') { $sunday[$a]++; }

    if ($x==0) $fd = $line[1].'.'. $line[2]; // Use this for total statistics

    // Get Hits per building
    $mh = strlen ($pieces[$x]);
    $clang = substr($pieces[$x], $mh-3, $mh-1); // Current Language
    $cid = round(substr($pieces[$x], $mh-11, 2)); // Current id (inc 2 to read
number ids > 99)

```

```

        if (strpos($clang, 'en') !==false ) { $hitsen[$cid]++; $totenglish++; } else {
$hitsgr[$cid]++; $totgreek++; }
        if ($mid<$cid) $mid=$cid;
    }
// Show Total Visitor Statistics
echo '<br>';
$totallines = $xmax;
$totalusers = $android+$iphone+$windows; // Known OS users
$unk = $totallines-$totalusers; // Unknown OS users
$totalusers = $totalusers+$unk; // Total users
$perand = round(($android/$totalusers)*100);
$periph = round(($iphone/$totalusers)*100);
$perwin = round(($windows/$totalusers)*100);
$perunk = round(($unk/$totalusers)*100);
echo 'Total hits since '.$fd.' 2012: <b>'.$xmax.'</b><br>';
echo 'Total Android users: <b>'.$android.'</b> ('.$perand.'%)'.<br>';
echo 'Total iPhone users: <b>'.$iphone.'</b> ('.$periph.'%)'.<br>';
echo 'Total Windows users: <b>'.$windows.'</b> ('.$perwin.'%)'.<br>';
echo 'Total Undefined OS users: <b>'.$unk.'</b> ('.$perunk.'%)'.<br>';
echo 'Total hits for Greek language:<b>'.$totgreek.'</b><br>';
echo 'Total hits for English language:<b>'.$totenglish.'</b><br>';
echo 'Total hits per hour:<br>'; for ($x=0;$x<24;$x++) echo $x.':00
'.$hoursarray[$x].' hits '.<br>';
echo '<br><b>Monday</b><br>'; for ($x=0;$x<24;$x++) echo $x.':00
'.$monday[$x].'<br>';
echo '<br><b>Tuesday</b><br>'; for ($x=0;$x<24;$x++) echo $x.':00
'.$tuesday[$x].'<br>';
echo '<br><b>Wednesday</b><br>'; for ($x=0;$x<24;$x++) echo $x.':00
'.$wednesday[$x].'<br>';
echo '<br><b>Thursday</b><br>'; for ($x=0;$x<24;$x++) echo $x.':00
'.$thursday[$x].'<br>';
echo '<br><b>Friday</b><br>'; for ($x=0;$x<24;$x++) echo $x.':00
'.$friday[$x].'<br>';
echo '<br><b>Saturday</b><br>'; for ($x=0;$x<24;$x++) echo $x.':00
'.$saturday[$x].'<br>';
echo '<br><b>Sunday</b><br>'; for ($x=0;$x<24;$x++) echo $x.':00
'.$sunday[$x].'<br>';
// Show Hits per building
echo '<h2>Analysis per building:</h2>';
for ($x=1;$x<$mid+1;$x++)
{
    $fn = 'http://www.67100.gr/gr/'.$x.'_gr.html'; // Change this to where the
content is
    $html = file_get_contents($fn);
    $pieces = explode("<br><br>", $html);
    echo $pieces[0].'It had ';
    if ($hitsgr[$x]==') echo 'no visit in Greek language';
    if ($hitsgr[$x]==1) echo '1 visit in Greek language';
    if (($hitsgr[$x]>1) && ($hitsgr[$x]<>1)) echo $hitsgr[$x].' visits in Greek
language';
    echo ' and ';
    if ($hitsen[$x]==') echo 'no visit in English language';
    if ($hitsen[$x]==1) echo '1 visit in English language';
    if (($hitsen[$x]>1) && ($hitsen[$x]<>1)) echo $hitsen[$x].' visits in English
language';
}
?>
</body>
</html>

```

File 5: log.html This is a sample of the visitor logging file that is stored by the system.

```
14:01 11th July 62.74.11.34 Mozilla/5.0 (iPhone; CPU iPhone OS 8_4 like Mac OS X)
AppleWebKit/600.1.4 (KHTML, like Gecko) Mobile/12H143 Safari ID: 5 lang: en<br>
09:56 12th July 188.73.252.75 Mozilla/5.0 (Linux; Android 4.4.4; E2115 Build/24.0.B.5.14)
AppleWebKit/537.36 (KHTML, like Gecko) Chrome/43.0.2357.93 Mobile Safari/537.36 ID: 12 lang:
gr<br>
11:19 12th July 188.73.249.40 Mozilla/5.0 (iPhone; CPU iPhone OS 8_4 like Mac OS X)
AppleWebKit/600.1.4 (KHTML, like Gecko) Version/8.0 Mobile/12H143 Safari/600.1.4 ID: 6 lang:
gr<br>
11:21 12th July 188.73.249.40 Mozilla/5.0 (iPhone; CPU iPhone OS 8_4 like Mac OS X)
AppleWebKit/600.1.4 (KHTML, like Gecko) Version/8.0 Mobile/12H143 Safari/600.1.4 ID: 9 lang:
gr<br>
11:22 12th July 188.73.249.40 Mozilla/5.0 (iPhone; CPU iPhone OS 8_4 like Mac OS X)
AppleWebKit/600.1.4 (KHTML, like Gecko) Version/8.0 Mobile/12H143 Safari/600.1.4 ID: 11 lang:
gr<br>
04:06 14th July 94.67.178.91 Mozilla/5.0 (iPhone; CPU iPhone OS 8_4 like Mac OS X)
AppleWebKit/600.1.4 (KHTML, like Gecko) Version/8.0 Mobile/12H143 Safari/600.1.4 ID: 11 lang:
gr<br>
14:49 19th July 188.73.193.6 Mozilla/5.0 (iPhone; CPU iPhone OS 8_3 like Mac OS X)
AppleWebKit/600.1.4.15.16 (KHTML, like Gecko) Version/6.0 Mobile/10A523 Safari/8536.25 ID: 11
lang: gr<br>
00:48 20th July 37.6.41.44 Mozilla/5.0 (iPhone; CPU iPhone OS 8_3 like Mac OS X)
AppleWebKit/600.1.4.15.16 (KHTML, like Gecko) Version/6.0 Mobile/10A523 Safari/8536.25 ID: 11
lang: gr<br>
17:28 20th July 109.242.183.89 Mozilla/5.0 (iPhone; CPU iPhone OS 8_4 like Mac OS X)
AppleWebKit/600.1.4 (KHTML, like Gecko) Mobile/12H143 Safari ID: 4 lang: gr<br>
```

Note that a complete working example of all the previous scripts will be given out as part of the supplemental material in order to be used during the class.

6. Conclusions

Nowadays, visiting experience enhancements can be achieved with the use of a familiar to the visitor personal device.

In this tutorial, we presented the feedback gained after the annual operation of an experimental low-cost passive markers based information system that can be accessed by a wide range of mobile devices. We based our case study in an urban area of historical importance and architectural multiformity where the visitor could retrieve information on-demand over the Web. The obtained statistics indicate that the existence of such a system is meaningful and it will be used up to some extent to enhance the visiting experience while keeping the cost of infrastructures and operation to a minimum. Another important characteristic of the development costs had to do with use of the mobile device's build-it capabilities. Such an approach allows the minimisation of software development. Again, the low maintenance cost is highly associated with the passive markers. They have key properties such as their construction quality and durability that should be taken under consideration. The use of an antiglare film proved to be an efficient solution for outdoor applications that experience varying lighting conditions. Furthermore, the large passive marker size (equivalent to an A4 page) used in this experiment had to do with the need to make the existence of the system obvious. In a real case scenario, small sized passive markers can be used as those will be supported by other means of publicity. A demo of a simplified system was carried out during the summer school exposing the participants to some of the technologies involved in such systems.

Concluding, passive markers based systems are cost-efficient solutions that should be taken under consideration in cases where there is a need to create inexpensive and discreet outdoor or indoor information systems. The usage statistics presented in this work play an objective indicative role for the development of similar systems. Yet, the coverage and the quality of the content provided by such systems do play a significant role in their overall success.

References

- [1] Strategy Analytics,
<http://www.strategyanalytics.com/default.aspx?mod=saservice&a0=91#0>
- [2] N. Ryan, P. Mohr, D. Manzaroli, G. Mantovani, S. Bartolini, A. D'Elia, M. Pettinari, L. Roffia, L. Sklenar, F. Garzotto, T. Salmon, Interoperable multimedia mobile services for cultural heritage sites, Proceedings of EPOCH Open Digital Cultural Heritage Systems, Rome, Italy, February 2008.
- [3] C. Sintoris, D. Raptis, A. Stoica, N. Avouris, Delivering multimedia content in enabled cultural spaces, Proceedings of the 3rd International Mobile Multimedia Communications Conference, Nafpaktos, Greece, 27-29 August, 2007.
- [4] D. Raptis, N. Tselios, N. Avouris, Context-based design of mobile application for museums: A survey of existing practices, Proceedings of the 7th International Conference on Human Computer Interaction with mobile devices and services, Salzburg, Austria, 19-22 September, 2005, pp. 153-160.
- [5] M. Ancona, M. Cappello, M. Casamassima, W. Cazzola, D. Conte, M. Pittore, G. Quercini, N. Scagliola, M. Villa, Mobile vision and cultural heritage: the Agamemnon project, Proceedings of 1st International Workshop on Mobile Vision, Graz, Austria, May 2006, pp. 1-15.
- [6] M. Angelaccio, A. Basili, B. Buttarazzi, Using Geo-Business intelligence and social integration for smart tourism cultural heritage platforms, Proceedings of 22nd IEEE International Workshop on Enabling Technologies: Infrastructure for Collaborative Enterprises, Hammamet, Tunisia, 17-20 June, 2013, pp.196-199.
- [7] R. Brondi, M. Carrozzino, F. Tecchia, M. Bergamasco, Mobile augmented reality for cultural dissemination, Proceedings of 1st International Conference on Information Technologies for Performing Arts, Media Access and Entertainment, Firenze, Italy, 7-9 May, 2012, pp.113-117.
- [8] D. Uk Im, H. Ro Yoon, J. Yeong Lee, A case study of the walking trail applications on GPS-based smartphone using the local narrative, Advanced Science and Technology Letters, 12 (2012) 100-106.
- [9] T. Stefanov, M. Stefanova, Mobile applications for cultural and historical places, Digital Presentation and Preservation of Cultural and Scientific Heritage, 3 (2013) 227-234.
- [10] M. Nickerson, All the world is a museum: Access to cultural heritage information anytime, anywhere, Proceedings of ICHIM 2005 - Digital Culture & Heritage, Paris France, 21-23 September, pp. 2-15.
- [11] A. Kuusik, S. Roche, F. Weis, SMARTMUSEUM: Cultural content recommendation system for mobile users, Proceedings of 4th International Conference on Computer Sciences and Convergence Information Technology, Seoul, South Korea, 24-26 November, 2009, pp. 477-482.
- [12] S. Za, E. D'Atri, F. Mazzei, A. M. Braccini, Multimedia contents provision using bluetooth for cultural heritage applications: the MID-Blue project, Proceedings of 4th Interop-Vlab.It

Workshop on Pervasive Computing for Networked Enterprises, Rome, Italy, October 6-7, 2011, pp. 9-16.

- [13] M. H. Rung, D. Laursen, Adding to the experience: Use of smartphone applications by museum visitors, Proceedings of the Transformative Museum Conference, Roskilde, Denmark, 23-25 May, 2012, pp. 314-324.
- [14] B. Ruf, E. Kokiopoulou, M. Detyniecki, Mobile museum guide based on fast SIFT recognition, Proceedings of 6th International Workshop on Adaptive Multimedia Retrieval, Berlin, Germany, 26-27 June, 2008, pp. 170-183.
- [15] O. Choudary, V. Charvillat, R. Grigoras, P. Gurdjor, MARCH: Mobile augmented reality for cultural heritage, Proceedings of 17th ACM International Conference on Multimedia, Beijing, China, 19-24 October, 2009, pp.1023-1024.
- [16] Explore Amsterdam with QR codes, <http://www.iamsterdam.com/en-GB/experience/about-amsterdam/areas/amsterdam-neighbourhoods/explore-amsterdam-gr-codes>
- [17] Wikipedia City, http://blog.wikimedia.org/2012/05/16/monmouthpedia_day
- [18] Annette Haworth, Peter Williams, Using QR codes to aid accessibility in a museum, J Assistive Technologies, 6 (2012) 285-291.
- [19] U. B. Ceipidor, C. M. Medaglia, A. Perrone, M. De Marsico, G. Di Romano, A museum mobile game for children using QR-codes, Proceedings of the 8th International Conference on Interaction Design and Children, Como, Italy, 2009, pp. 282-283.
- [20] S. Andolina, D. Pirrone, G. Russo, S. Sorce, A. Gentile, Exploitation of mobile access to context-based information in cultural heritage fruition, Proceedings of the 7th International Conference on Broadband, Wireless Computing, Communication and Applications, Victoria, Canada, 12-14 November, 2012, pp.322-328.
- [21] Monmouth, the world's first Wikipedia Town http://blog.wikimedia.org/2012/05/16/monmouthpedia_day
- [22] QR Droid application, DroidLa, <https://play.google.com/store/apps/details?id=la.droid.qr&hl=en>